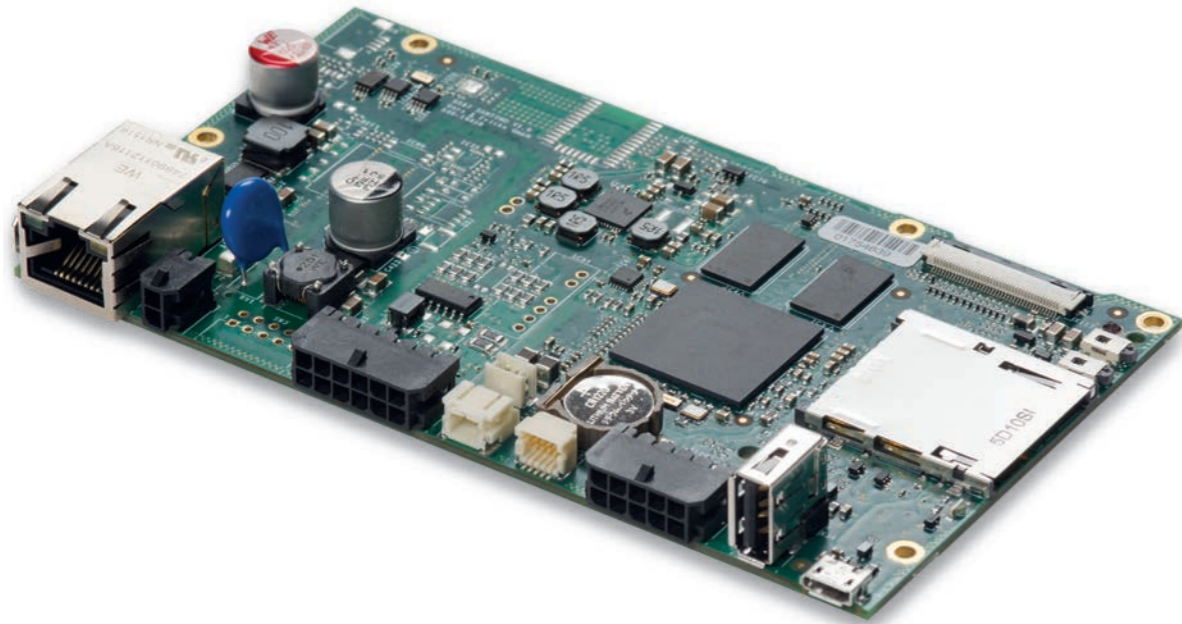
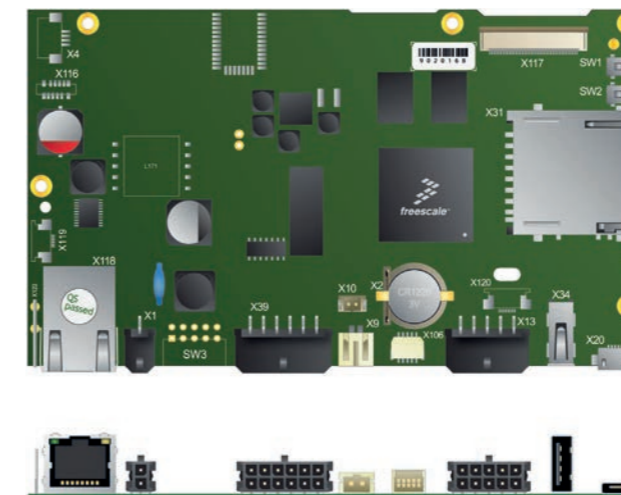
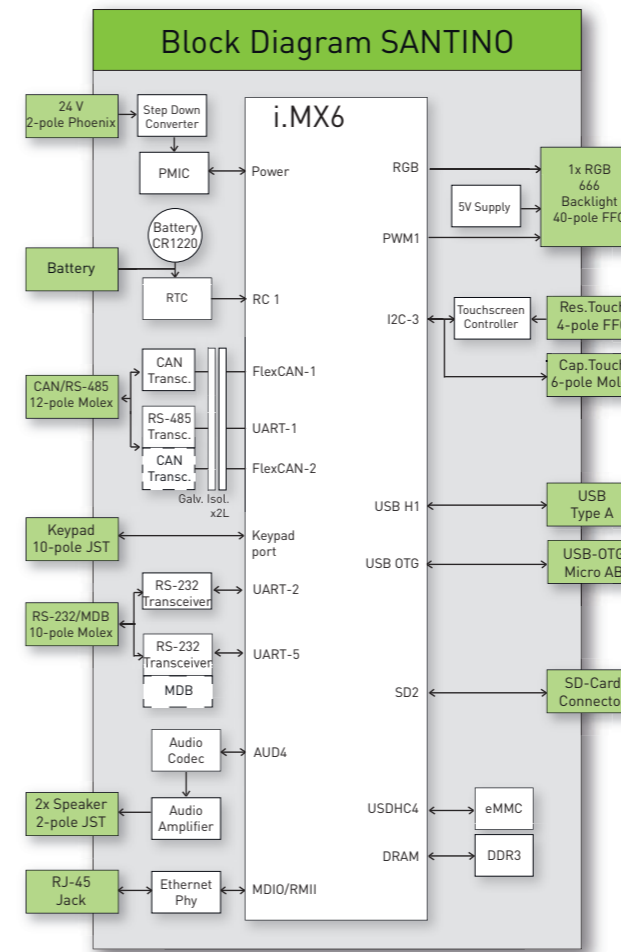


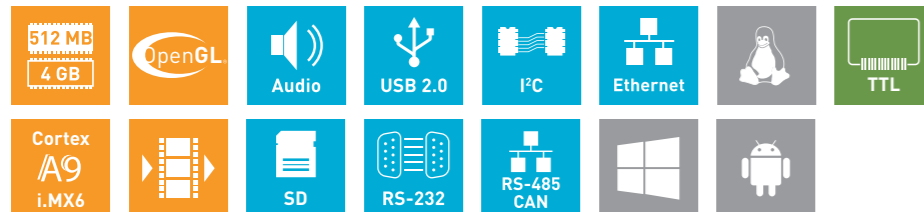
**SANTINO core**  
 ARM Cortex-A9 Single Board Computer



The i.MX6 economy solution for 7.0" TTL displays with industrial features.



CPU	x1	x2L
CPU Type	i.MX6Solo	i.MX6DualLite
Core Class	ARM Cortex - A9	
Core Clock	1 GHz	
Features	NEON for SIMD media acceleration and VFP operations; Multi-format HD 1080p video decoder and HD 720p video encoder hardware engine; L1 cache, 32 KB for instruction, 32 KB for data; 512 KB L2 cache	
HW Accelerators	OpenGL ES 2.0, OpenVG 1.1	
RTC	Accuracy: +/- 30 ppm at 25°C	
<b>Memory</b>		
eMMC Flash	4 GB MLC eMMC	
RAM Standard	512 MB 32 bit DDR3L	1 GB 32 bit DDR3L
SD Card Slot	4 bit MMC/SDIO/SD/SDHC	
<b>Operating Systems</b>		
Supported OS	Windows Embedded Compact 7/2013, Linux Yocto, Android	
<b>Communication Interfaces</b>		
Network	1x 10/100 Mbit/s Ethernet (RJ-45)	
USB 2.0	1x 480 Mbit/s Host (Type A) 1x 480 Mbit/s OTG (Type Micro-AB)	
CAN Fieldbus/ RS-485	1x CAN (ISO/DIS 11898) + 1x RS-485	1x CAN (ISO/DIS 11898) + 1x RS-485 galvanic isolated
RS-232	2x RS-232 (RX/TX/CTS/RTS)	
Synchronous Serial Interfaces	I <sup>2</sup> C, Matrix keypad up to 4 x 4	
<b>Audio</b>		
Speaker output	1x speaker (connector), 1.5 W RMS (8Ω)	
Audio Internal	1x speaker connector parallel to external output	
<b>Display and Touch</b>		
Display Interface	TTL, 18 bit (RGB)	
Touch Interface	4-wire analog resistive; PCAP I <sup>2</sup> C	
<b>Device Dimensions</b>		
W x H x D	138.0 x 18.0 x 80.0 mm	
Weight	97g	
<b>Power Supply</b>		
Supply Voltage	Nom. 9 to 32V DC	
Consumption	Typ. 2.0; max. 19.6 W	
<b>Typical Environmental Conditions</b>		
Storage Temp.	-20 to +70 °C	
Operating Temp.	0 to +60 °C	
Humidity	5 to 90 % RH	



Online support on [www.garz-fricke.com](http://www.garz-fricke.com)

„This product can be modified by alternative assembly. Please contact us for available options.“