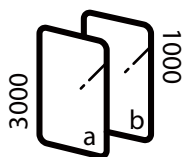


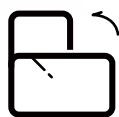
DW SERIES

# DW551DR4

55" Dual Side Digital Signage



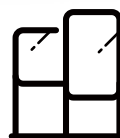
3000 / 1000NITS  
DUAL SIDED DESIGN



PORTRAIT &  
LANDSCAPE



CEILING  
SUSPENDED



FLOOR  
MOUNTED



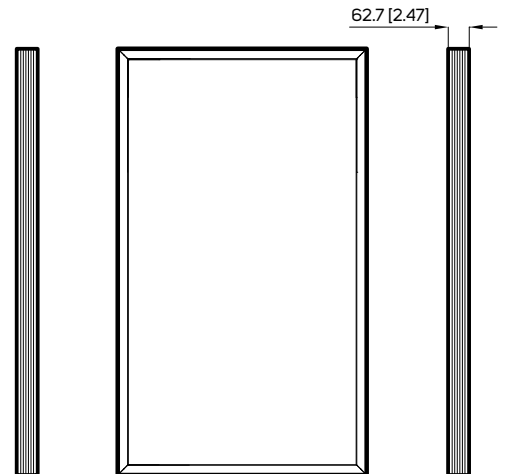
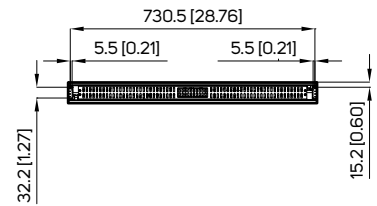
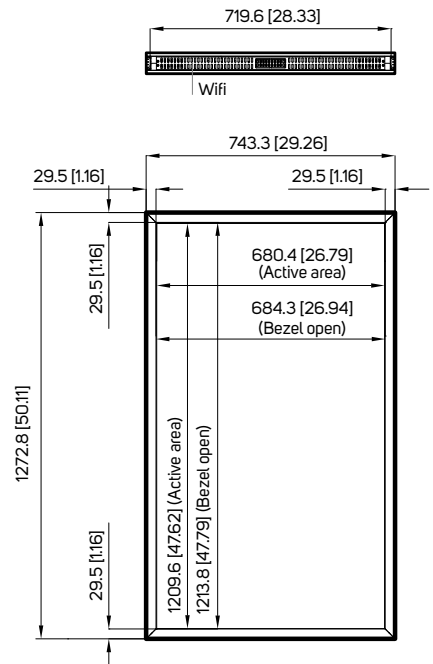
TRUECOLOR™  
CALIBRATED

# SPECIFICATION

<b>MODEL</b>	DW551DR4	
<b>PANEL</b>	LCD Panel Type	54.64 inches LCD (x2)
	Native Resolution	1920 x 1080
	Backlight	LED
	Default Color Temperature	D65 (6500 K)
	Brightness	1000 nits/ 3000 nits
	Color Depth	8 bits
	Contrast Ratio	3000:1
	Response Time (Typ.)	9 ms
	Viewing Angle (H/V)	178° / 178°
	Light Life Time (Typ.)	100,000 hrs
<b>POWER</b>	Panel Surface	AR, 2H
	Blackening Defect Free	Up to 110°C (230°F)
	Viewable With Polarized Lenses	Yes
	Power Supply	Internal
<b>MECHANICAL SPECS</b>	Rated Voltage	100-240V ~ 50/60Hz
	Power On Mode (Typ./ Max)	240 W / 380 W
	Power Saving Mode	< 1 W
<b>MECHANICAL SPECS</b>	Bezel Width (T/B/L/R)	Even bezel 29.5 mm
	Cabinet Color	Black
	Monitor Dimension (LxHxD, w/o stand)	1272.8 x 743.3 x 62.7 mm
	Monitor Weight	40 kg
	Orientation	Portrait/ Landscape
	Carring Handles	Yes
	Language	English
	Support SNMP (Up to V3.0)	Yes
	Dimming Control	Yes
	Proof of Image Retention	Yes
<b>USER INTERFACE</b>	Auto Orientation Sensor	Yes
	Ambient Light Sensor	Yes
	Power On/Off Scheduling	Yes
	Internal Temperature Sensor	Yes
	OSD Menu Rotation	Yes
<b>INPUT</b>	HDMI 1.4b (HDCP 1.4)	x2 (1080p)
	Display Port 1.2	x2
	DVI-D	x2
	Micro SD Slot	x2 (For Internal Player)
<b>OUTPUT</b>	USB 2.0	x2 (For Internal Player)
	Audio	x2
<b>EXTERNAL CONTROL</b>	RS-232	In x2
	RJ-45	x2 (LAN)
<b>INTERNAL PLAYER</b>	Operating System	Android 7.1.2
	Processor	ARM Quad-Core Cortex-A7
	Clock Speed	1.2 GHz
	Main Memory Interface	DDR3L-1066, 1GB
	Graphics	Mali-400MP2 GPU, Support OpenGL ES1.1/2.0
	Storage	Internal: Nand flash 8GB(multi sources) External: Support Micro SD, Up to 32GB
	Multimedia	VP8/H265/H264 video decoders, up to 60fps 1080P other video decoders (VC-1, MPEG-1/2/4, VP8)
<b>ENVIRONMENT</b>	Wi-Fi Specification	802.11 b/g/n   2412.0MHz - 2462.0MHz
	Operating Temperature	0° C ~ 45° C
	Storage Temperature	-20° C ~ 60° C
<b>CERTIFICATION</b>	Humidity	10% ~ 80% RH Non-condensing
	CE / FCC / RoHS	

# DIMENSIONS

Unit: mm [inch]



# INTERFACE

